

Group Show

Katarina Meister's solo show in Draakon gallery
15.03-1.04.2017



Whose works are they? Why is there none of my works on display? There are just long askew shadows of other people's works and images of artists who do not exist but have been derived using mathematical or mechanical methods. There is no original works to be found at the show... maybe two, however? From somewhere is arriving the smell of images long sunken in forgetfulness.

The descriptions of works moving from the left to the right



Paintings based on Ragne's collage work (2012).

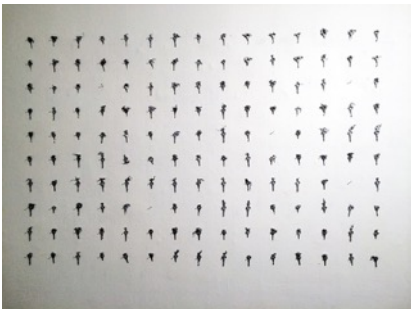


A work based on Johan H Pajupuu's **TV Landscapes (2013-2014)** and Alina's **Dice Floor Room "18 of Clubs" (2014)**. An interesting coincidence: Alina has chosen the lower part of her former painting as a base structure for her new work displayed in the middle of the exhibition with some legs attached to it. This painting only exists as a documentary photograph as its' support has been painted over.

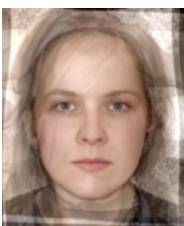
Until the last moment I did not know whether Johan H Pajupuu will join the show, as he always seems to, so I also used his works as a basis for my new works.



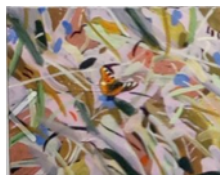
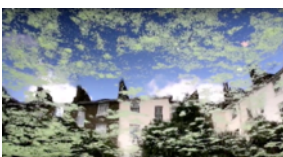
Some eyes and mouths picked from Heinrich's comics **The Charm Offensive (2014)**.



A painting based on Jenny's piece "**Aromäen Tie 60**" (2015). The image is taken from the installation displayed at our past group show **Copies** in Tallinn Art Hall. There she cast a key of her former country house in tin several times as she has no real access to the place anymore. People could take the keys with them. This photo was made before the keys were taken away and now this documentation has become a painting.



This is a scientific average face made of the 7 participants of the show and glazed with oil paint. As the downloaded image from the average face program had a very low-resolution, I decided to paint it sharper. Every brush stroke added more credibility to this character and was all in all a very uncanny process.



A fragmented snapshot of Liisi's video **EV4LK (2015)** and a tuned version of Liisa's painting **Colourful Summer (2017)** The work is mounted using static energy, so please be welcome to place it back on the wall as it falls down or relocate it.



A happening with Ragne's work. Documentation and a piece from my studio floor. Additional info can be read on the wall.

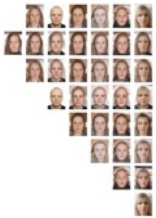


A non-scientific portrait of the participating artists.

Directions: Choose some portraits from the white box. Slide the pictures in from the upper part of the grey box.

Tips:

From time to time the image might get stuck a little and not slide down the whole way. In that case push gently the lower part of the aluminium picture and use your other hand to get it down. In order to perceive all 7 portraits at once, I recommend to slide them in at the time.

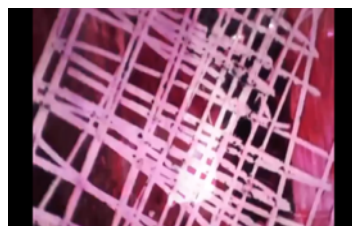


Scientific combinations of artists faces. Everybody's face is combined with the others.

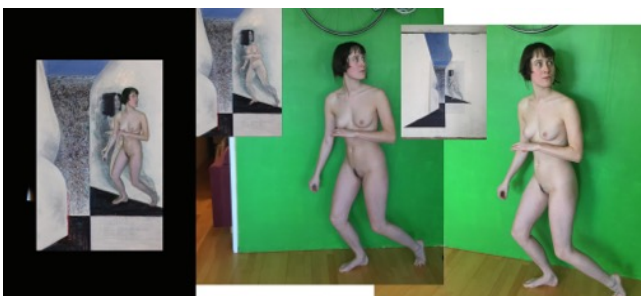
Feed the mouth some money and choose your favourite version of that art piece. Scrape it to reveal a face you want to explore.



A combined painting with fragments from Liisa's "Fin" painting(2015) and Heinrich's comic The Charm Offensive (2014).



A collage of a fragment of Alina's painting Chess Game (2014) installation in Polymer Art Container and a snapshot from Liisi's video Scream (2013).



All around the gallery runs a strip of Alina's Chess Game (2014) which is combined with my re-enactment of it at my home in Helsinki. An interesting note: the original model for the painting was me too. The shoot took place in the Estonian Academy of Arts former location at Gonsiori street.